



VPN Client Installation For Windows Vista (Manual Install)

The installation procedure assumes that you have the following:

- You are connected to the Internet via an Ethernet adapter or have a supported modem installed.
 - TCP/IP is installed.
 - You have an account with an Internet Service Provider (ISP).
 - You have read and agreed with the [Usage Restrictions](#) for the VPN service.
-

1. Log on to your Windows Vista computer as Administrator or a user with administrator privileges.
2. Open the **Start Menu** and select the **Control Panel** option.
3. Once **Control Panel** is open click **View network status and tasks** under the **Network and Internet** option.

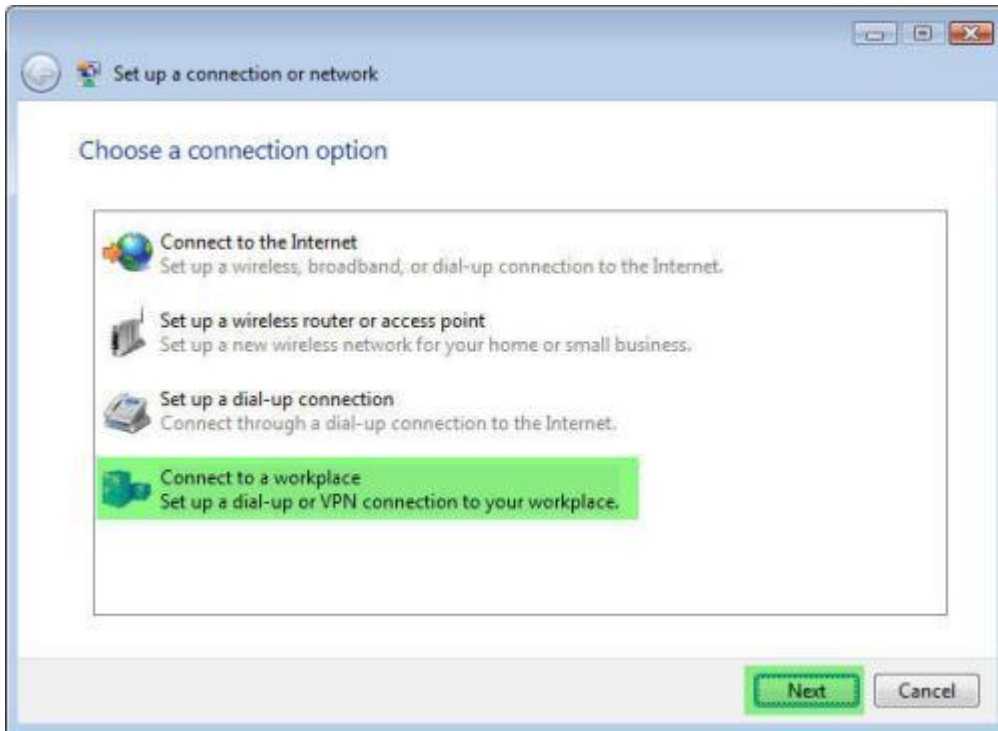


4. In the next window, click **Set up a connection or network**.

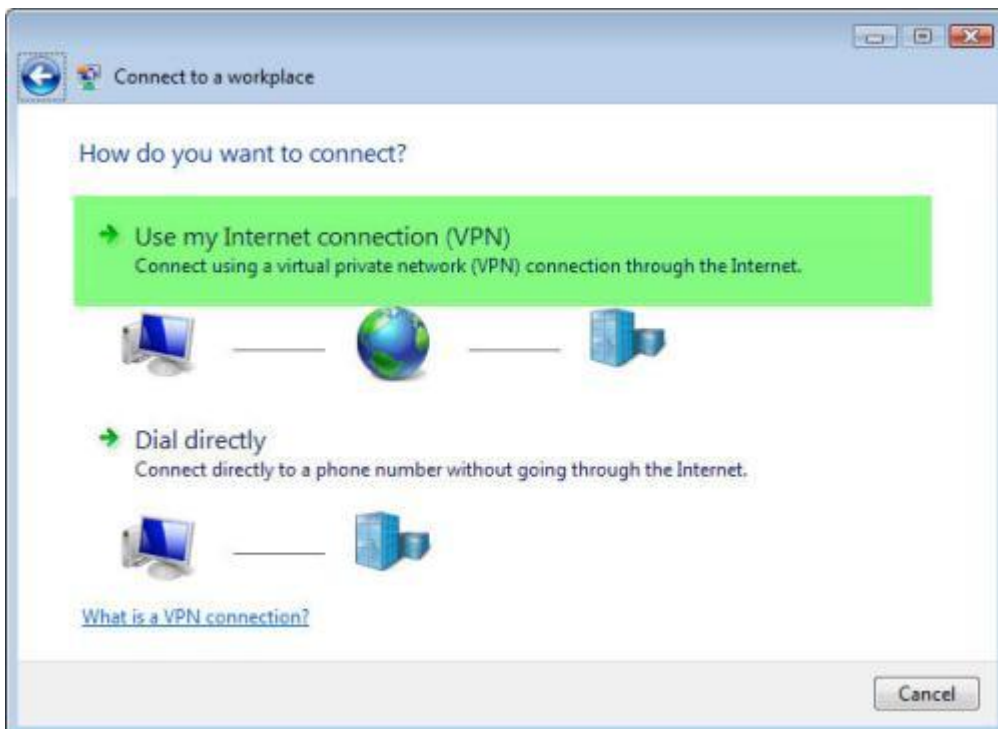




5. In the **Set up a connection or network** window, click the **Connect to a workplace** option and click **Next**.



6. Once the **Connect to a workplace** window launches, click **Use my Internet connection (VPN)**.





7. Enter **vpn1.homepage100.com** for the Internet address and **Silverland VPN** for the Destination Name. Tick **Don't connect now; just set it up so I can connect later** and click **Next**.

Connect to a workplace

Type the Internet address to connect to

Your network administrator can give you this address.

Internet address:

Destination name:

Use a smart card

Allow other people to use this connection
This option allows anyone with access to this computer to use this connection.

Don't connect now; just set it up so I can connect later

8. In the next window, fill-in your **User name** and **Password**. Now click **Create**.

Connect to a workplace

Type your user name and password

User name:

Password:

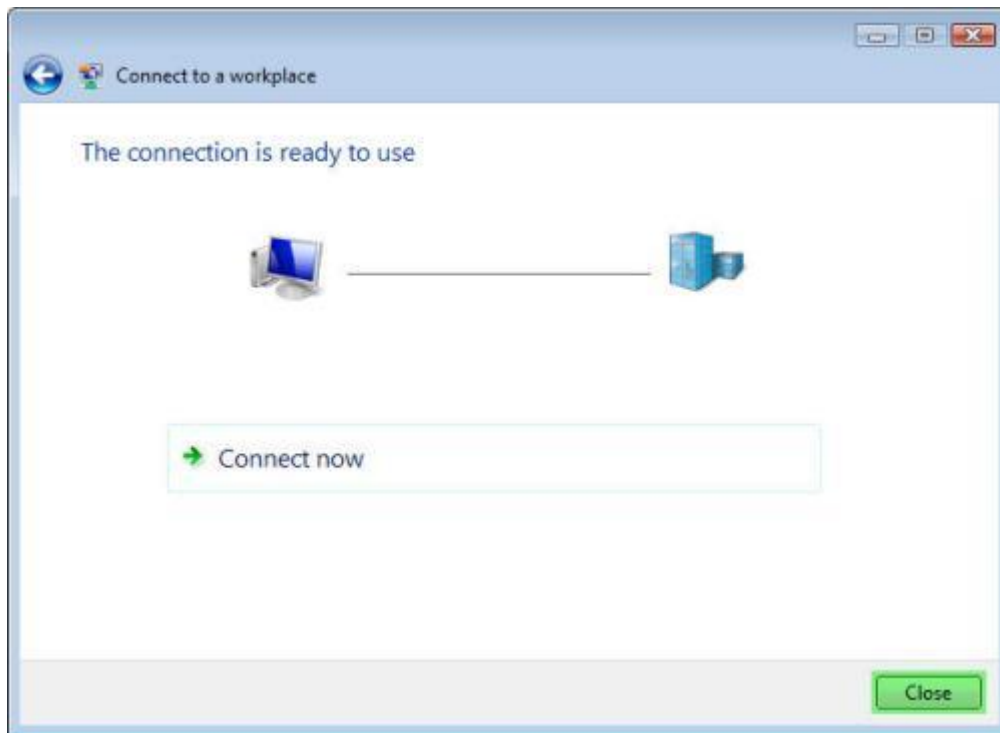
Show characters

Remember this password

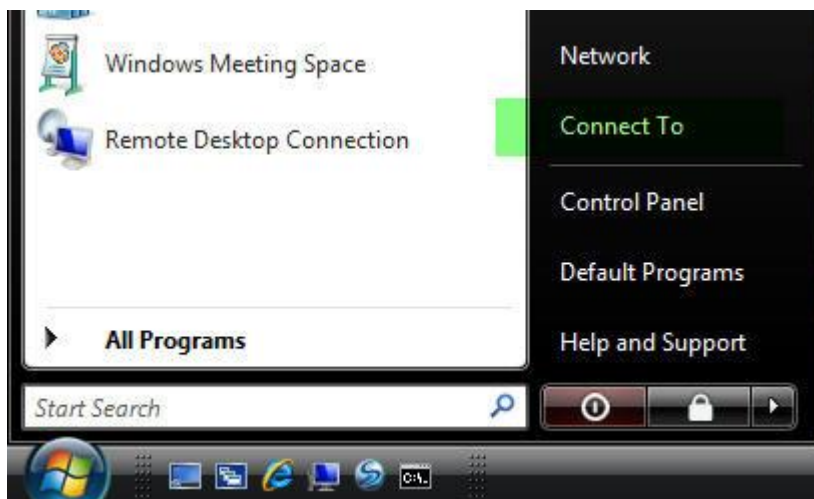
Domain (optional):



9. Now that the main details of the connection have been entered. Click **Close** in the next window.



10. We are almost finished. Open the **Start Menu** and select the **Connect To** option.



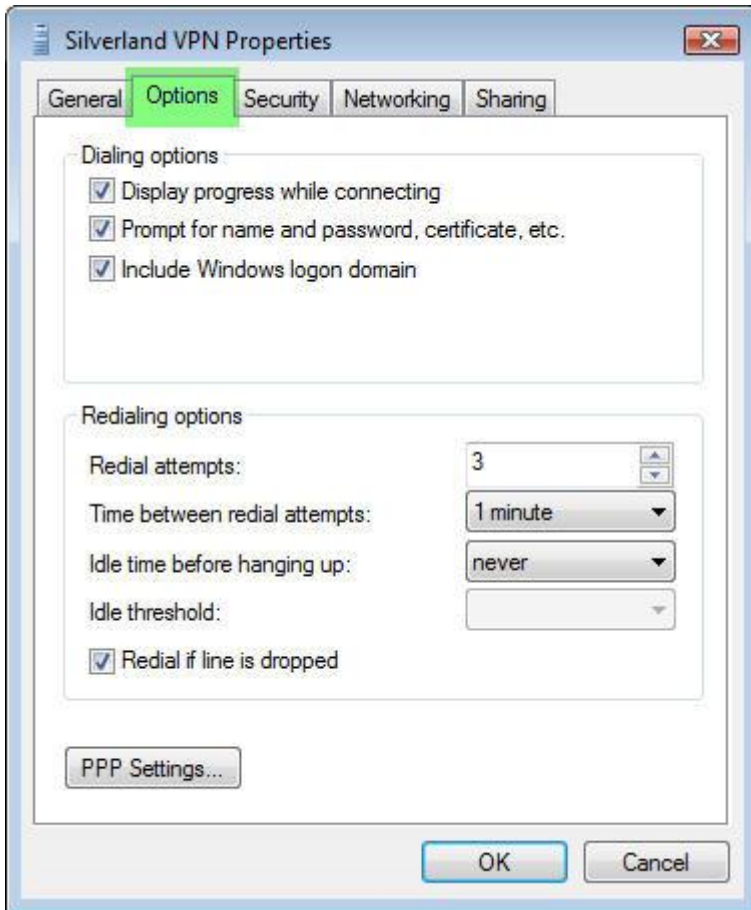


11. In the **Connect to a network** window, right click the **Silverland VPN** option and click on **Properties** from the popup menu.



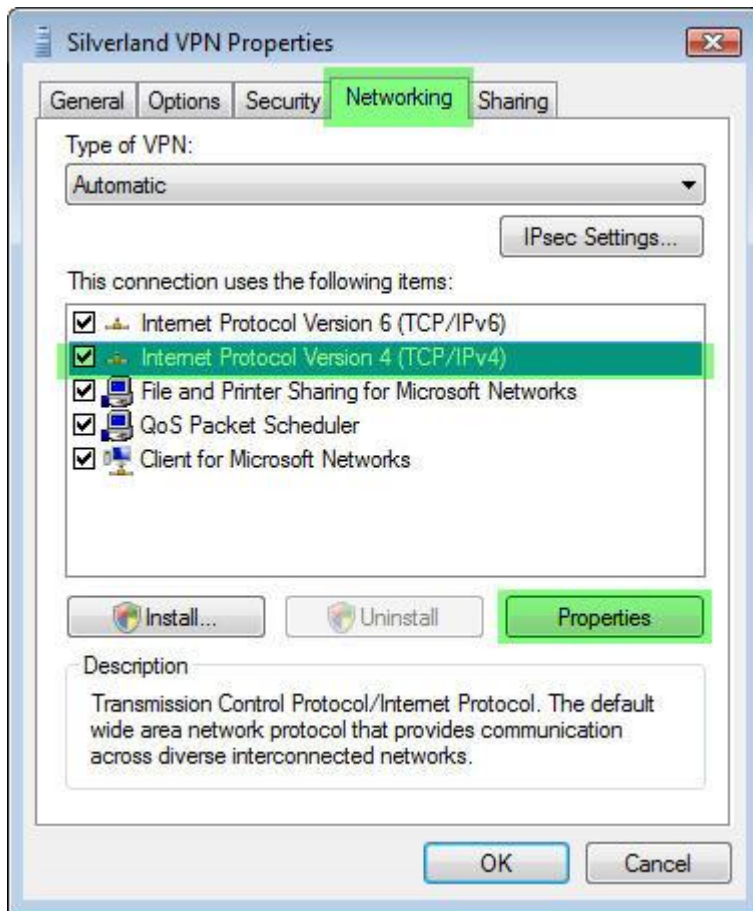


12. From the **Properties** dialog click on the **Options** tab. Because the Internet is sometimes slow and unresponsive it is possible that contact with the VPN service will be lost from time to time. If you are connected to the Internet via a LAN connection you may also wish to tick the **Redial if line is dropped** option. Next click on the **Networking** tab.



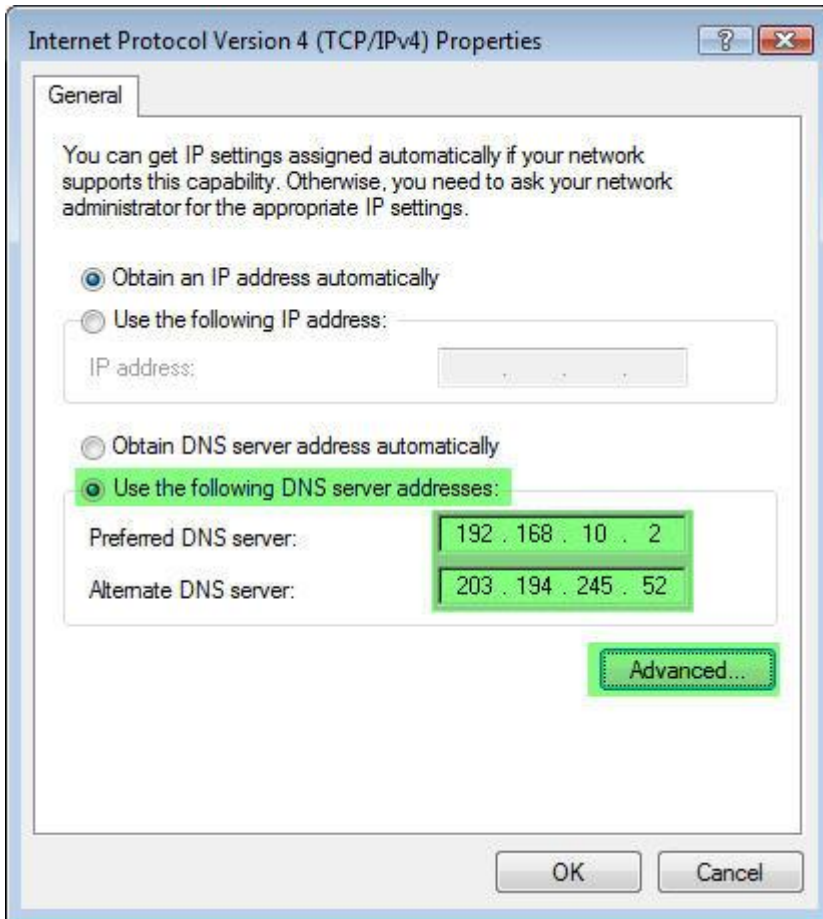


13. From the **Networking** tab, highlight **Internet Protocol Version 4 (TCP/IPv4)** by clicking on it and click **Properties**.



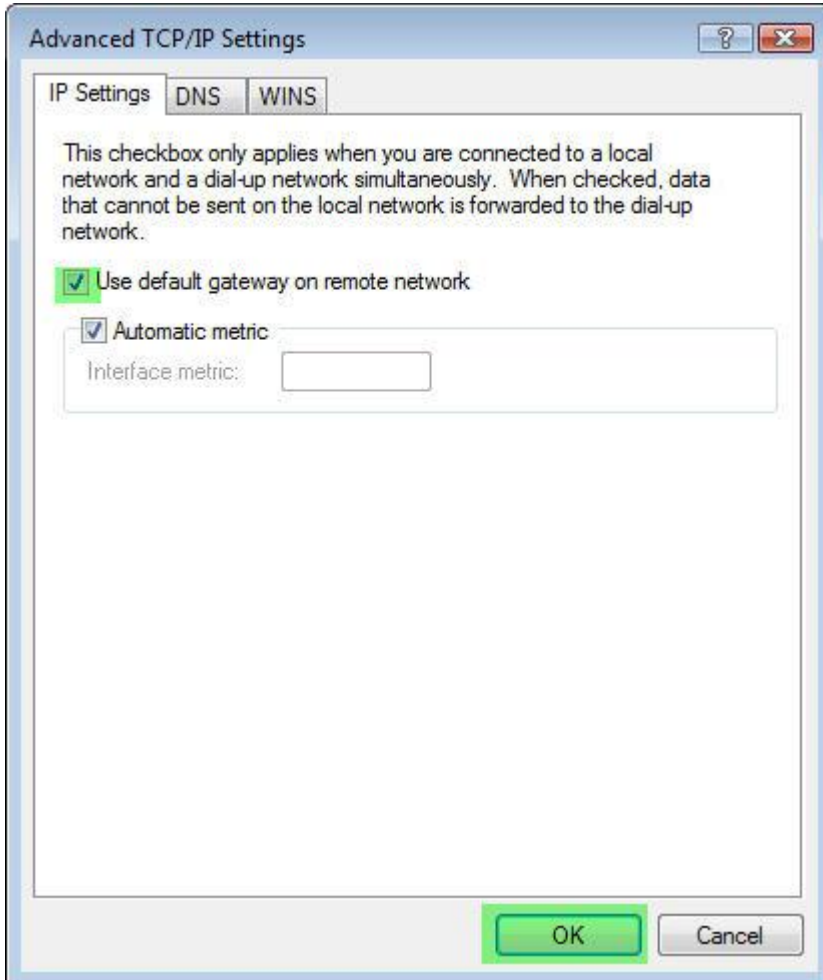


14. In the **Internet Protocol Version 4 (TCP/IPv4) Properties** window, select **Use the following DNS server addresses** and enter **192.168.10.2** for the **Preferred DNS server** and **203.194.245.52** for the **Alternate DNS server**. Next click the **Advanced...** button.



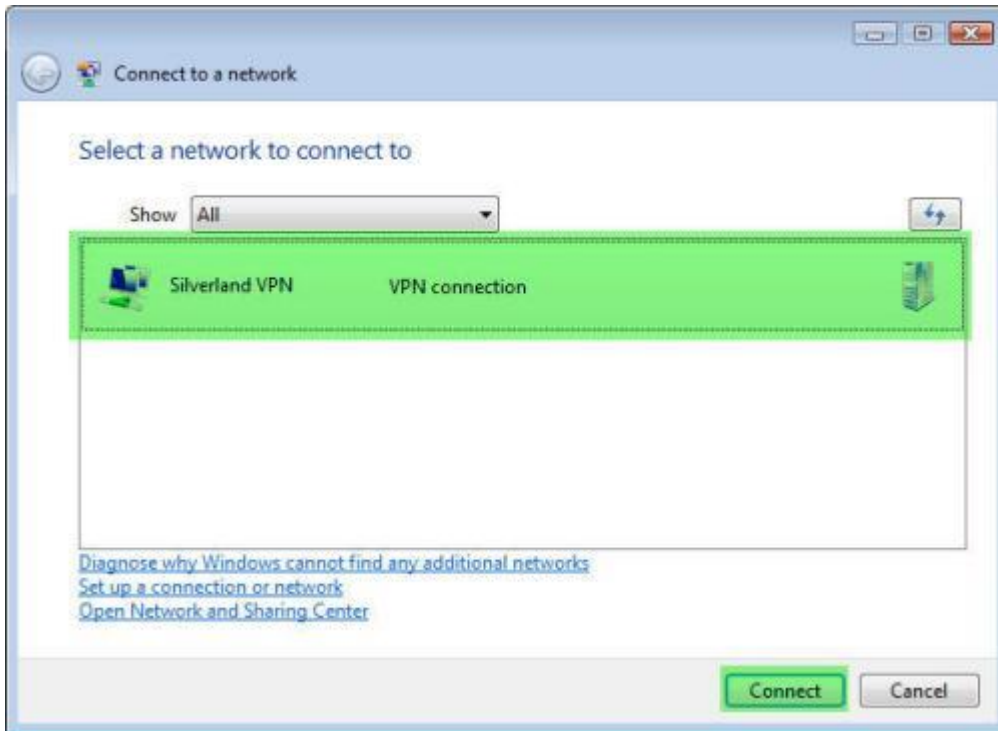


15. In the **IP Settings** tab under the **Advanced TCP/IP Settings** window, make sure **Use default gateway on remote network** is checked. If this is not checked, all internet traffic from your computer will not route through our VPN server. Next click **OK**. Click **OK** again for the **Internet Protocol Version 4 (TCP/IPv4) Properties** window and finally **OK** for the **Silverland VPN Properties** window.





16. This will bring you back to the **Connect to a network** window. Click the **Silverland VPN** connection and click **Connect**.



Note: The previous steps will only have to be performed once for installation. On subsequent connections, you only need to open the **Start Menu** and select the **Connect To** option and choose the connection name to connect.



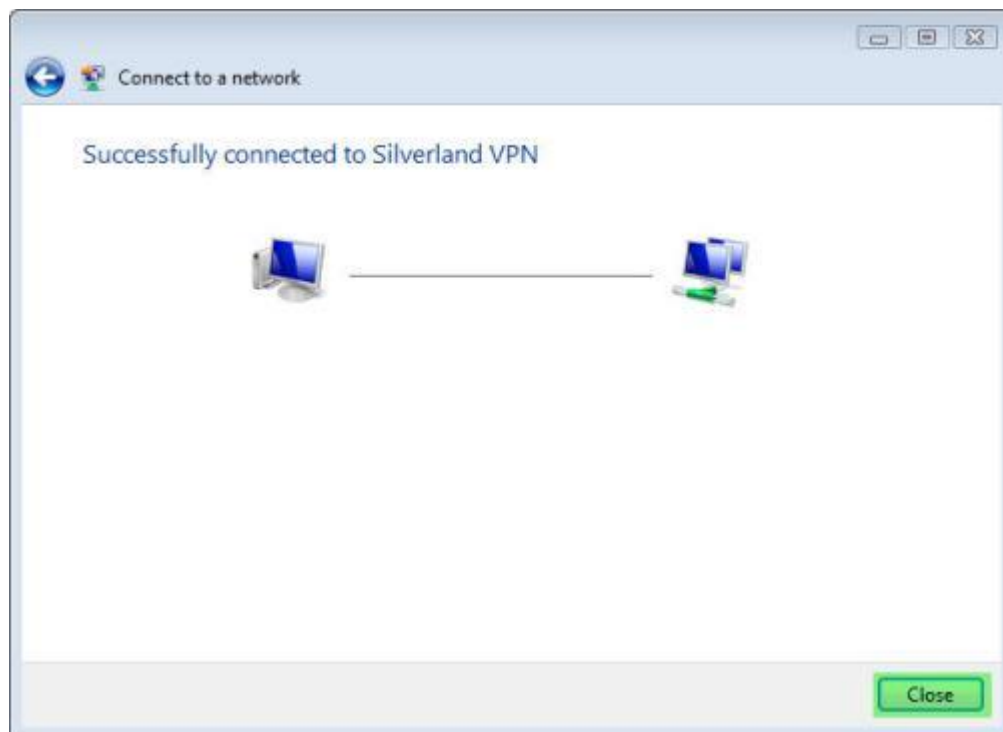
17. Finally you will need to fill-in your **User name** and **Password**. Now click **Connect**.



Note: If you are using your own computer and wish to save the user name and password for subsequent connections, check **Save this user name and password for the following users**. However, **if you are using a public computer, we STRONGLY advise you NOT to check this option as other users will be able to gain access to your VPN account.**



18. Once you've successfully connected to our VPN Service you will see the following window. Click **Close** to close the notification window.



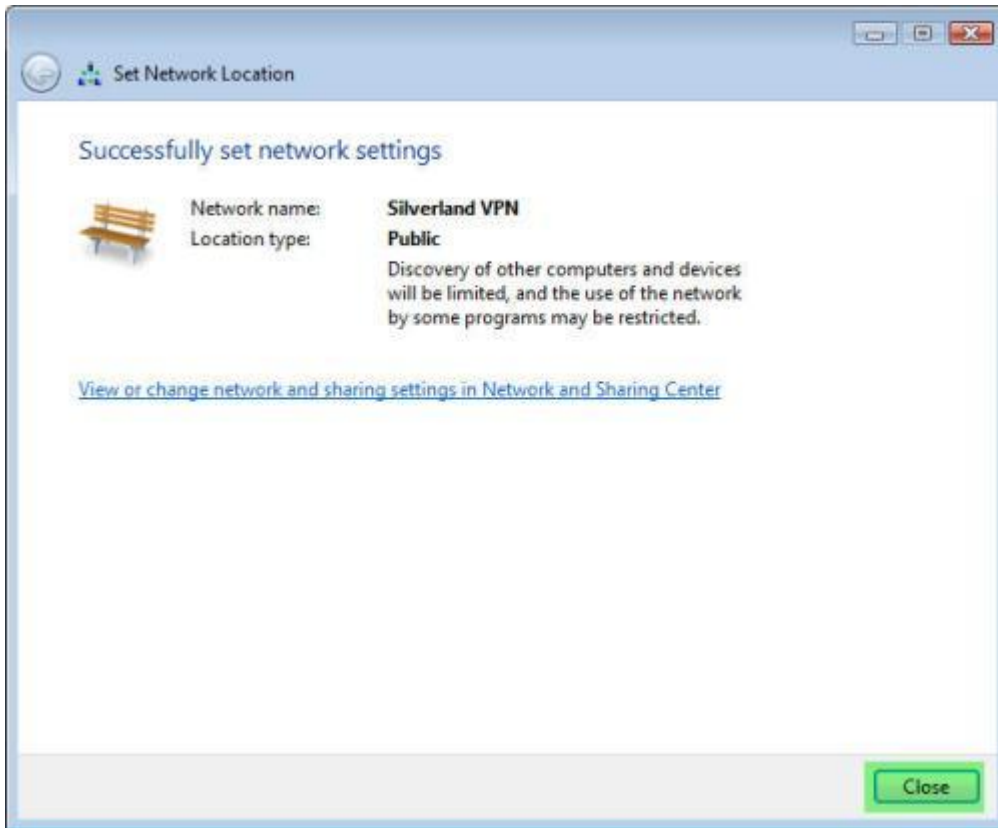


19. For a first time connection, Windows Vista will ask you to select your network location. Since you do not need to access other resources on our network, choose **Public location** by clicking on it.





20. Once set, a window will pop up telling you that Windows Vista has successfully set the network settings. Click **Close**.



To disconnect from our VPN service at any time simply **Right Click** on the network icon in the taskbar and choose the **Disconnect from** option and click **Silverland VPN**.

